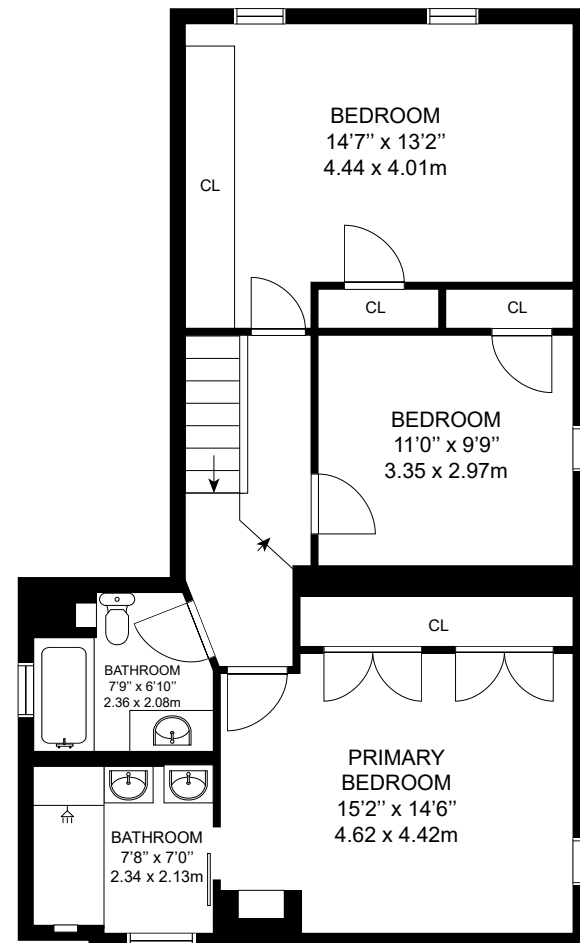
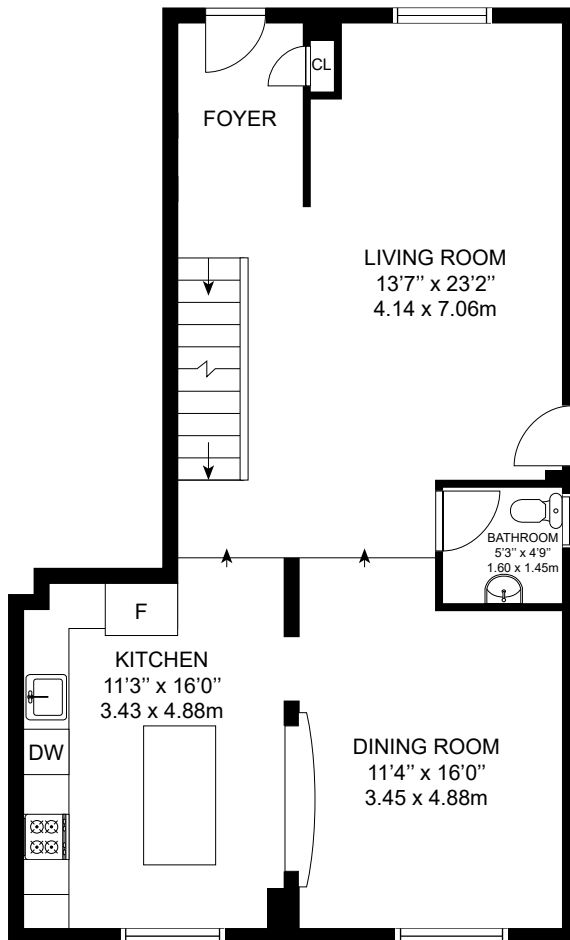
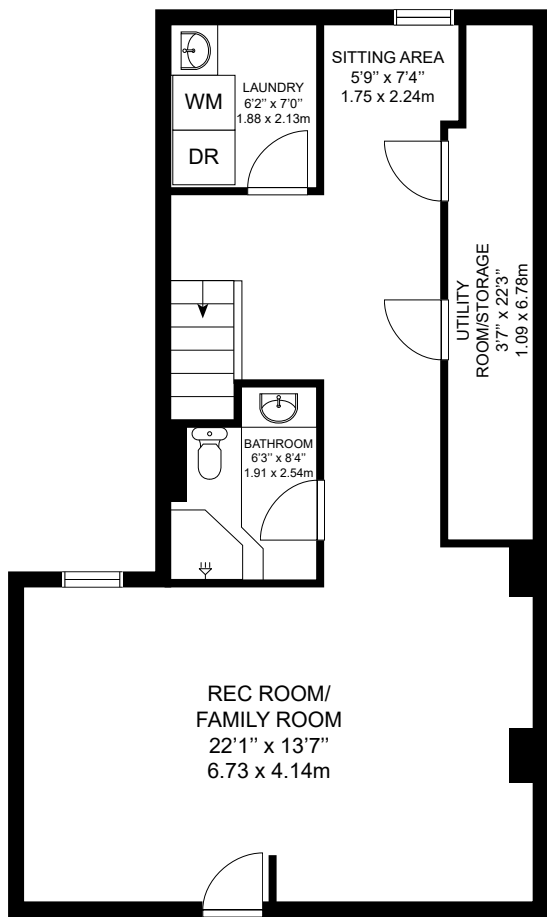


# 24 BOULTON AVE, TORONTO, ON



GROSS INTERNAL AREA  
 LOWER LEVEL: 763 sq. ft, MAIN LEVEL: 837 sq. ft  
 2ND LEVEL: 843 sq. ft  
 TOTAL: 2443 sq. ft, 227 m<sup>2</sup>

MEASUREMENTS AND CALCULATIONS ARE APPROXIMATE, TO BE USED AS LAYOUT GUIDELINES AND ILLUSTRATIVE PURPOSES ONLY. ACTUAL MAY DIFFER.