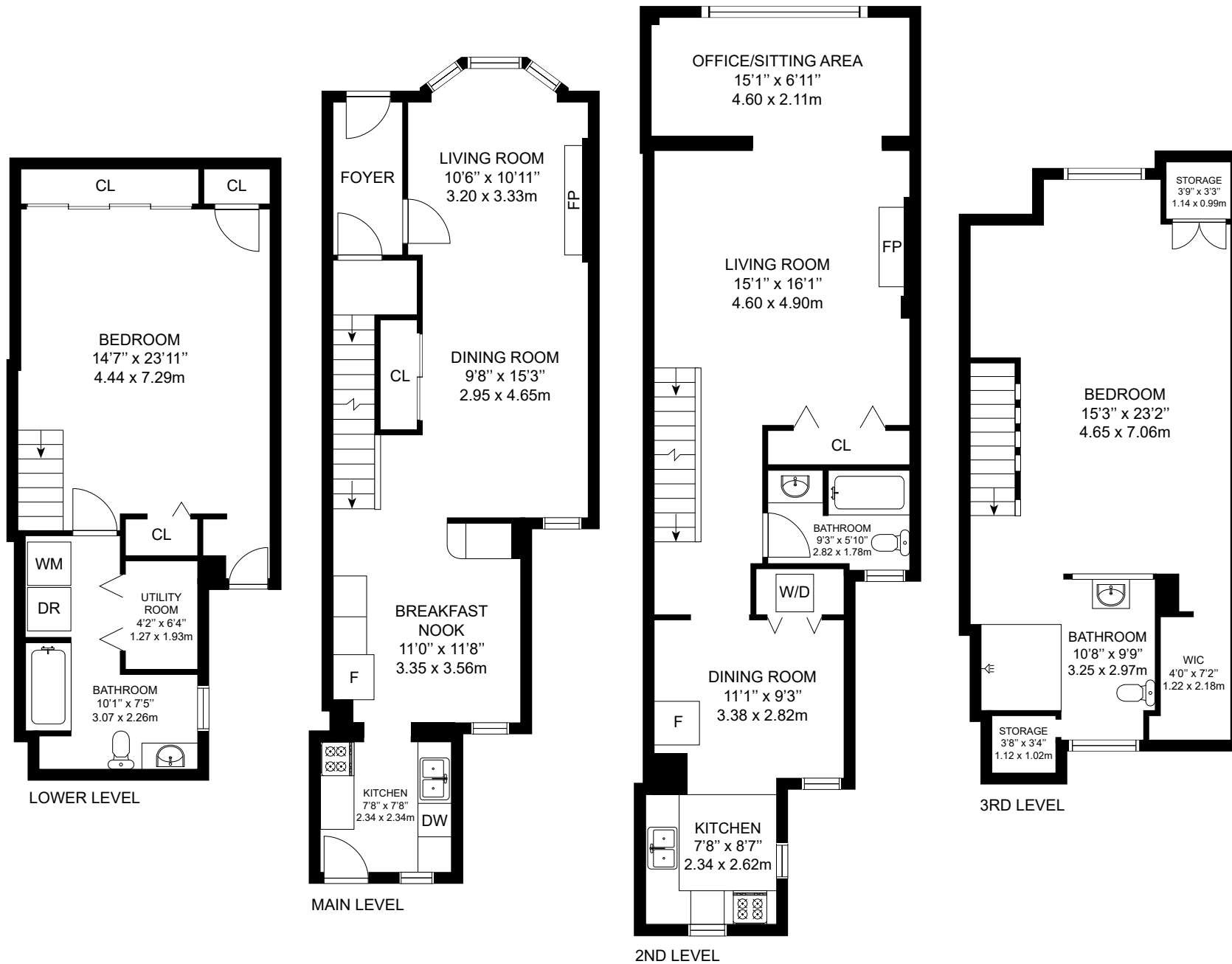


797 CARLAW AVE, TORONTO, ON



GROSS INTERNAL AREA
 LOWER LEVEL: 532 sq. ft, MAIN LEVEL: 660 sq. ft
 2ND LEVEL: 787 sq. ft, 3RD LEVEL: 570 sq. ft
 TOTAL: 2549 sq. ft, 236 m²

MEASUREMENTS AND CALCULATIONS ARE APPROXIMATE, TO BE USED AS LAYOUT GUIDELINES AND ILLUSTRATIVE PURPOSES ONLY. ACTUAL MAY DIFFER.