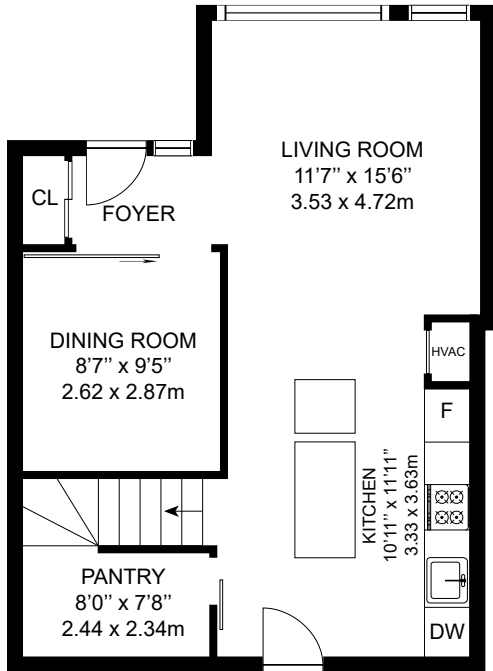
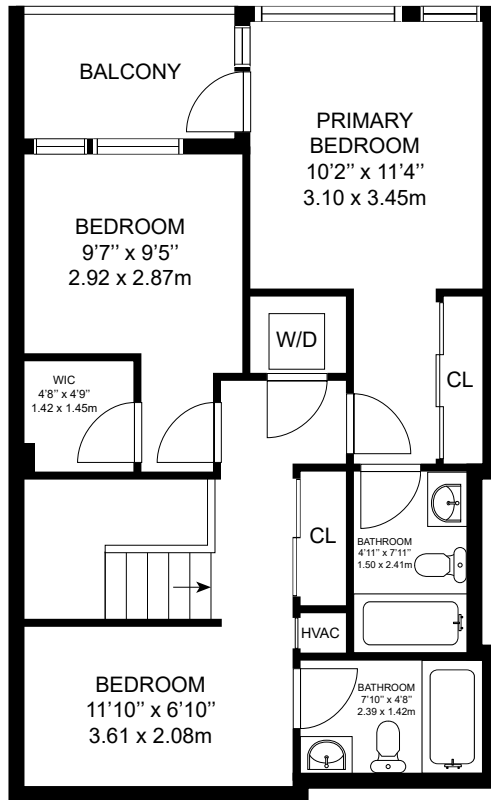


130 ST DAVID ST, TORONTO, ON



MAIN LEVEL



2ND LEVEL

GROSS INTERNAL AREA
MAIN LEVEL: 587 sq. ft, 2ND LEVEL: 704 sq. ft
TOTAL: 1291 sq. ft, 120 m²

MEASUREMENTS AND CALCULATIONS ARE APPROXIMATE, TO BE USED AS LAYOUT GUIDELINES AND ILLUSTRATIVE PURPOSES ONLY. ACTUAL MAY DIFFER.